

**ESD Antibody (monoclonal) (M01)**  
**Mouse monoclonal antibody raised against a partial recombinant ESD.**  
**Catalog # AT1948a**

**Specification**

---

**ESD Antibody (monoclonal) (M01) - Product Information**

Application	WB, E
Primary Accession	<a href="#">P10768</a>
Other Accession	<a href="#">NM_001984</a>
Reactivity	Human
Host	mouse
Clonality	Monoclonal
Isotype	IgG2a Kappa
Calculated MW	31463

**ESD Antibody (monoclonal) (M01) - Additional Information**

**Gene ID** 2098

**Other Names**

S-formylglutathione hydrolase, FGH, Esterase D, Methylumbelliferyl-acetate deacetylase, ESD

**Target/Specificity**

ESD (NP\_001975.1, 183 a.a. ~ 281 a.a) partial recombinant protein with GST tag. MW of the GST tag alone is 26 KDa.

**Dilution**

WB~~1:500~1000

E~~N/A

**Format**

Clear, colorless solution in phosphate buffered saline, pH 7.2 .

**Storage**

Store at -20°C or lower. Aliquot to avoid repeated freezing and thawing.

**Precautions**

ESD Antibody (monoclonal) (M01) is for research use only and not for use in diagnostic or therapeutic procedures.

**ESD Antibody (monoclonal) (M01) - Protocols**

Provided below are standard protocols that you may find useful for product applications.

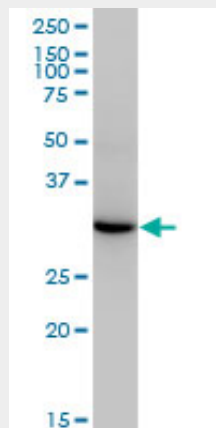
- [Western Blot](#)
- [Blocking Peptides](#)
- [Dot Blot](#)

- [Immunohistochemistry](#)
- [Immunofluorescence](#)
- [Immunoprecipitation](#)
- [Flow Cytometry](#)
- [Cell Culture](#)

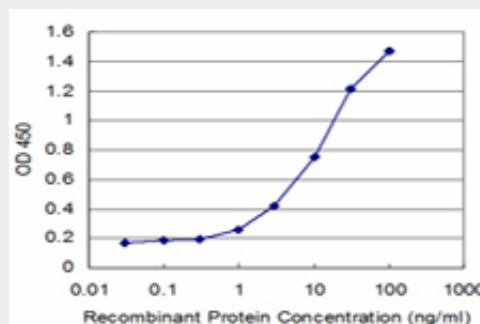
## ESD Antibody (monoclonal) (M01) - Images



Antibody Reactive Against Recombinant Protein. Western Blot detection against Immunogen (36.63 kDa) .



ESD monoclonal antibody (M01), clone 1E1. Western Blot analysis of ESD expression in Jurkat (Cat # AT1948a )



Detection limit for recombinant GST tagged ESD is approximately 1ng/ml as a capture antibody.

## ESD Antibody (monoclonal) (M01) - Background

This gene encodes a serine hydrolase that belongs to the esterase D family. The encoded enzyme is active toward numerous substrates including O-acetylated sialic acids, and it may be involved in the recycling of sialic acids. This gene is used as a genetic marker for retinoblastoma and Wilson's disease.

#### **ESD Antibody (monoclonal) (M01) - References**

Association study between single-nucleotide polymorphisms in 199 drug-related genes and commonly measured quantitative traits of 752 healthy Japanese subjects. Saito A, et al. J Hum Genet, 2009 Jun. PMID 19343046. Crystal structure of human esterase D: a potential genetic marker of retinoblastoma. Wu D, et al. FASEB J, 2009 May. PMID 19126594. Proteomic surveillance of retinal autoantigens in endogenous uveitis: implication of esterase D and brain-type creatine kinase as novel autoantigens. Okunuki Y, et al. Mol Vis, 2008 Jun 12. PMID 18552983. The status, quality, and expansion of the NIH full-length cDNA project: the Mammalian Gene Collection (MGC). Gerhard DS, et al. Genome Res, 2004 Oct. PMID 15489334. The DNA sequence and analysis of human chromosome 13. Dunham A, et al. Nature, 2004 Apr 1. PMID 15057823.